



Connect with us:
info@blokcam.com
www.blokcam.com

4,	BLOKCAM EXPLAINED	16,	CRANE CAMERA
6,	SAFETY	19,	TWIN CRANE CAMERA
8,	PRODUCTIVITY	20,	ACCESSORIES
10,	TELESCOPIC CONFIGURATION	22,	TESTIMONIALS
11,	LUFFING CONFIGURATION	23,	CASE STUDY
14,	FLAT TOP CONFIGURATION		

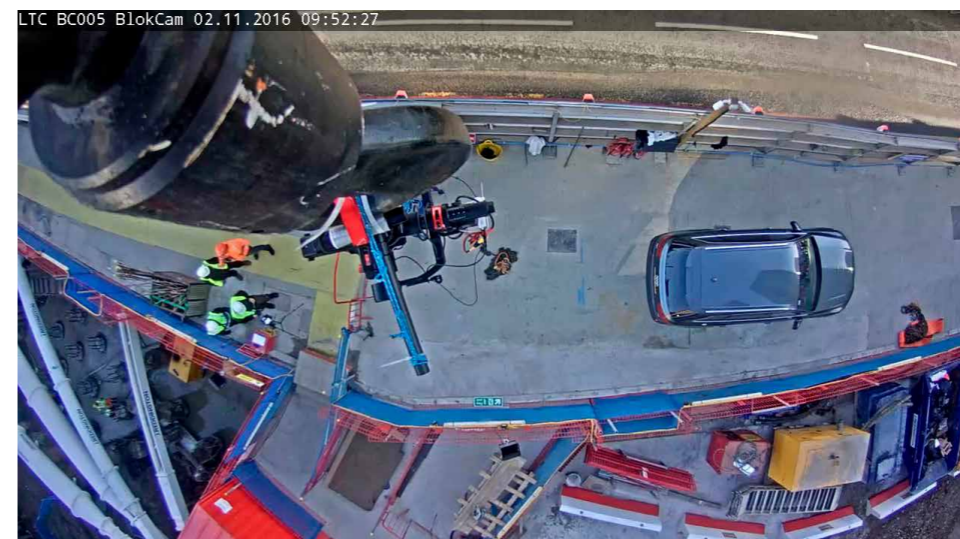


Image of the BlokCam being viewed remotely on a mobile device.

Designed and Engineered with Quality in Mind Built for Purpose



BlokCam is a wireless system that can be quickly and easily deployed to the hook block or boom tip of a crane. The sound and view from below the camera is then transmitted and received wirelessly via the antenna systems to a screen in the cab. This allows the operator to see and hear the load and surroundings, giving an unobstructed, live, audio-visual feed of the critical areas that working in the blind would never allow.

How It Works

1

On the Hook Block and/or Boom Tip

The Sensor captures the audio-visual feed and sends it to the transmitter. The signal is then transmitted to a repeater on the Jib, Boom or Cab. The battery powers both the Transmitter and the Sensor. Each component attaches magnetically and can be mounted on the block, including between the cheek plates and on the boom tip.

2

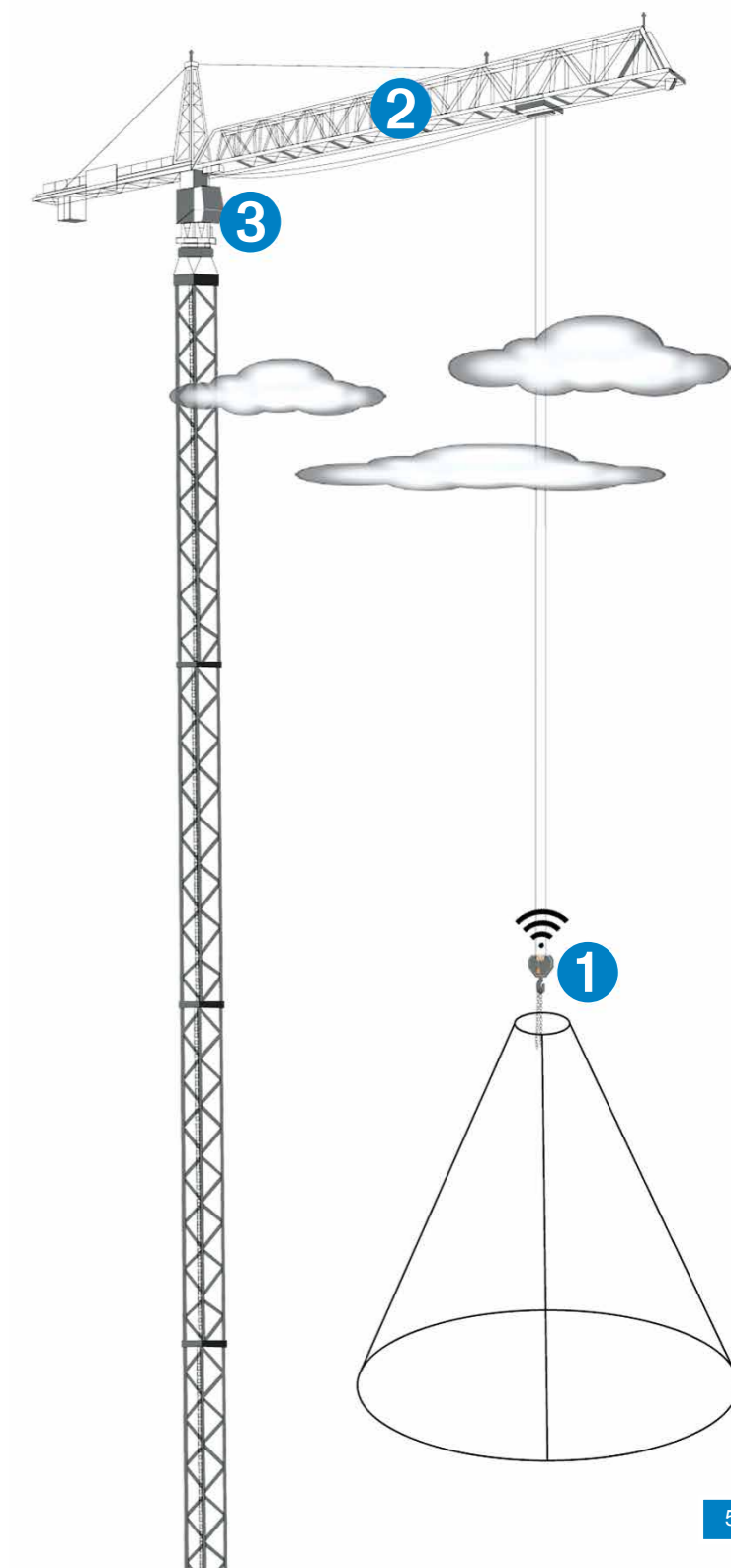
Repeater on the Jib/Boom and/or Cab

The Repeater receives the wireless signal from the transmitter and is relayed back to a monitor in the cab. The Repeater position and configuration is dependent on the type of crane, type of jib/boom and length of jib/boom.

3

In the Operator's Cab

The live audio-visual feed is then processed and displayed on the screen positioned inside the cab, allowing the operator to see and hear live footage of everything below the camera.



SAFETY

Reducing The Hazards

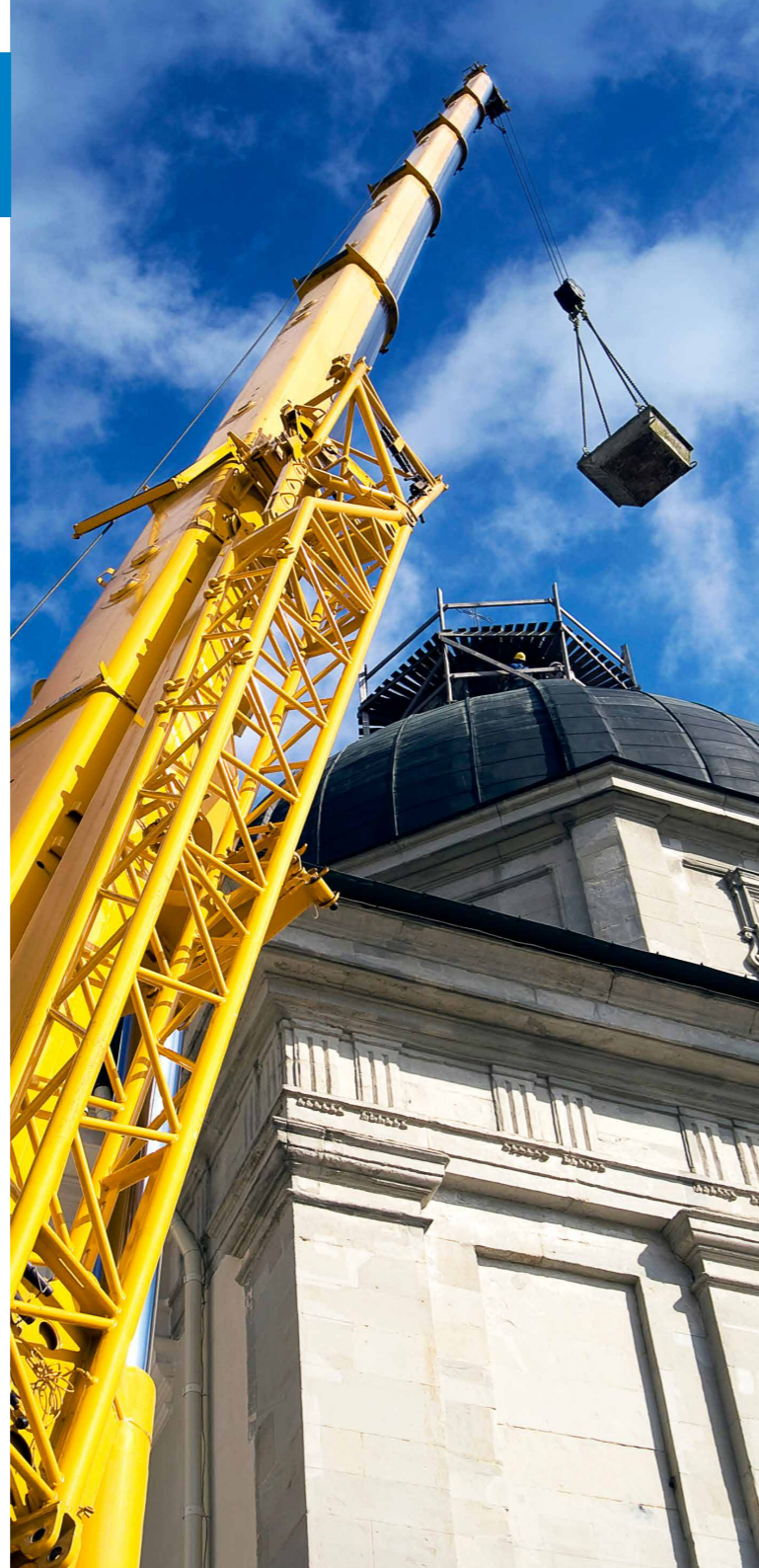
A high percentage of crane-related injuries are caused by uncontrolled loads striking personnel in the area surrounding the hook block; this is an extremely hazardous area where 21% of injuries occur. With BlokCam fitted the operator now has eyes and ears in that zone to make the necessary corrections to avoid any incidents.

Confirming Load Security

BlokCam allows the operator to view and hear the load and surrounding area, confirming the balance and security before starting the lift. This confirms the communication with the banks-men and also helps keep the utilisation of the equipment to a maximum without any delayed lifts and re-slinging. Rigging/Slinging failures account for 10% of crane-related incidents.

Reduce Blind Lifting

The highest factor in many below the hook accidents occur in blind lift situations where the operator is completely reliant on the radio communications, which can fail for a number of reasons, leaving a delay in the message and a potential incident happening. BlokCam reduces the amount of blind lifting by giving the operator live audio and video footage and the ability to see and hear what's going on below the hook and around the load.



Improved Communication

The crane operator can now have eyes and ears from the block allowing detailed views of the load, site and its surroundings. This provides the ability to communicate to the banks-men, slingers and signallers with any information necessary to move from point to point in a more controlled environment and enhances the ability to communicate more efficiently.

Helping Reduce Stress

Crane operators have a lot of responsibility when operating a crane; long shifts in difficult conditions can cause additional stress, especially in all weather conditions. BlokCam helps to reduce this stressful activity by verifying the radio communications, bringing the operators that step closer to being in touching range of the load and site areas with a visual view that confirms the loads security, balance and any hazards below and around the load

Reduce Impacts & Collisions

Modern construction sites are becoming more and more congested and as buildings are going higher, crane operators are required to place their loads in even more restricted and tighter areas than before. The probability of impacts and collisions are still as great if not more so. Having BlokCam fitted with its clear and uninterrupted audio-visual feed allows the operator to respond to any adjustments to avoid any potential accidents before they happen, allowing for a safer and more productive lift.



PRODUCTIVITY

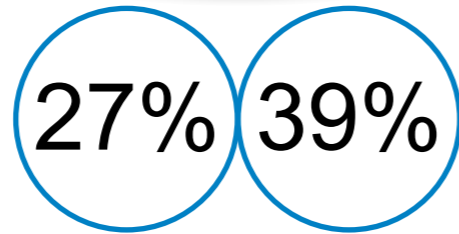
Improve Lifting Times

With BlokCam giving a close up view of the load below the hook and surrounding area, the operator will have more situational awareness, allowing an increase in speed and accuracy in all scenarios. This will improve the lift efficiency and reduce time in task completion. This increase in productivity could be measured in hundreds of man-hours saved and a more controlled utilisation of equipment.



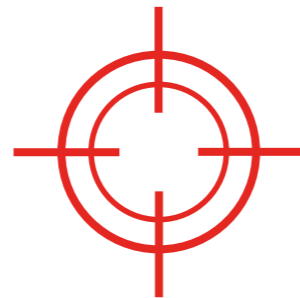
Recorded Results

According to a university study in the Journal of Construction Engineering and Management, having a camera system installed on a crane can help increase productivity by up to 39% in the blind and 27% in the open as a direct result.



Helping Hand

The operator now has the added advantage with the BlokCam system fitted as a visual aid to help position the hook block into the required position whilst working in tandem with the instructions given by the banks-men/slinger over the radio, complimenting and confirming the correct position, keeping a steady flow of continued and sustainable lifting tasks helping to increase the productivity.



Adjustments and corrections

BlokCam allow an operator's experience to be maximised and put to use in critical lifts, whilst providing visual and audible information, contextual awareness and aid communication with the banks-man. Imagine driving a car blindfolded while the passenger directs you where to go, when to stop and how fast to move, it would be a difficult, dangerous and stressful task to complete. Now imagine how much safer and efficient the driver can manoeuvre without the blindfold? The operator can quickly make adjustments required to minimise corrections and overshoots and help improve the productivity.



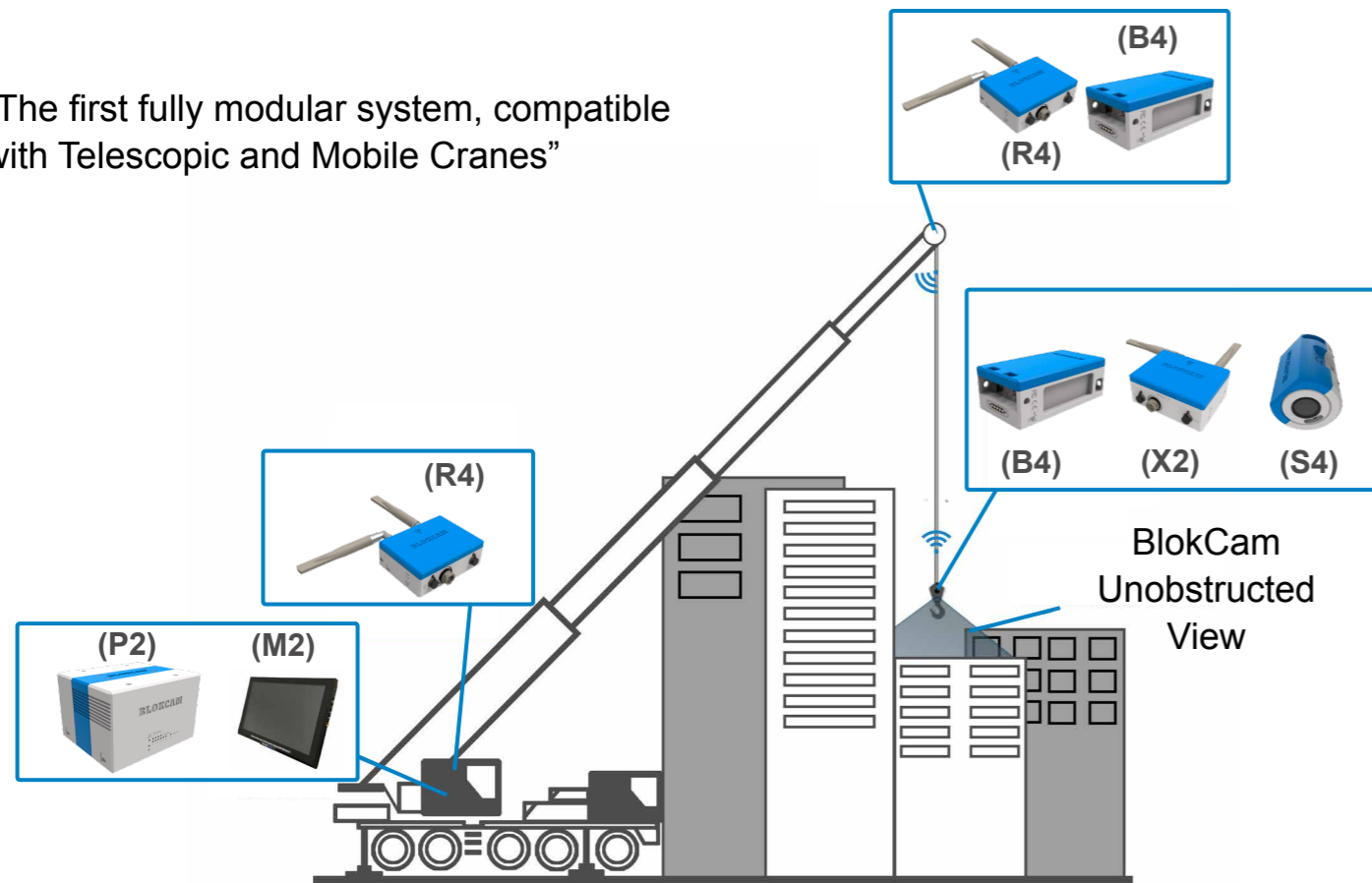
Return on the Bottom Line

With BlokCam fitted, the benefits of improved communication and maximised safety all play their part in the contribution to the greater efficiency and enhancement to the productivity of the lifting tasks on any site. If you can reduce the blind lift, reduce any corrections and overshoots you will see a drastic improvement in the overall bottom line of that projects lifting plan.

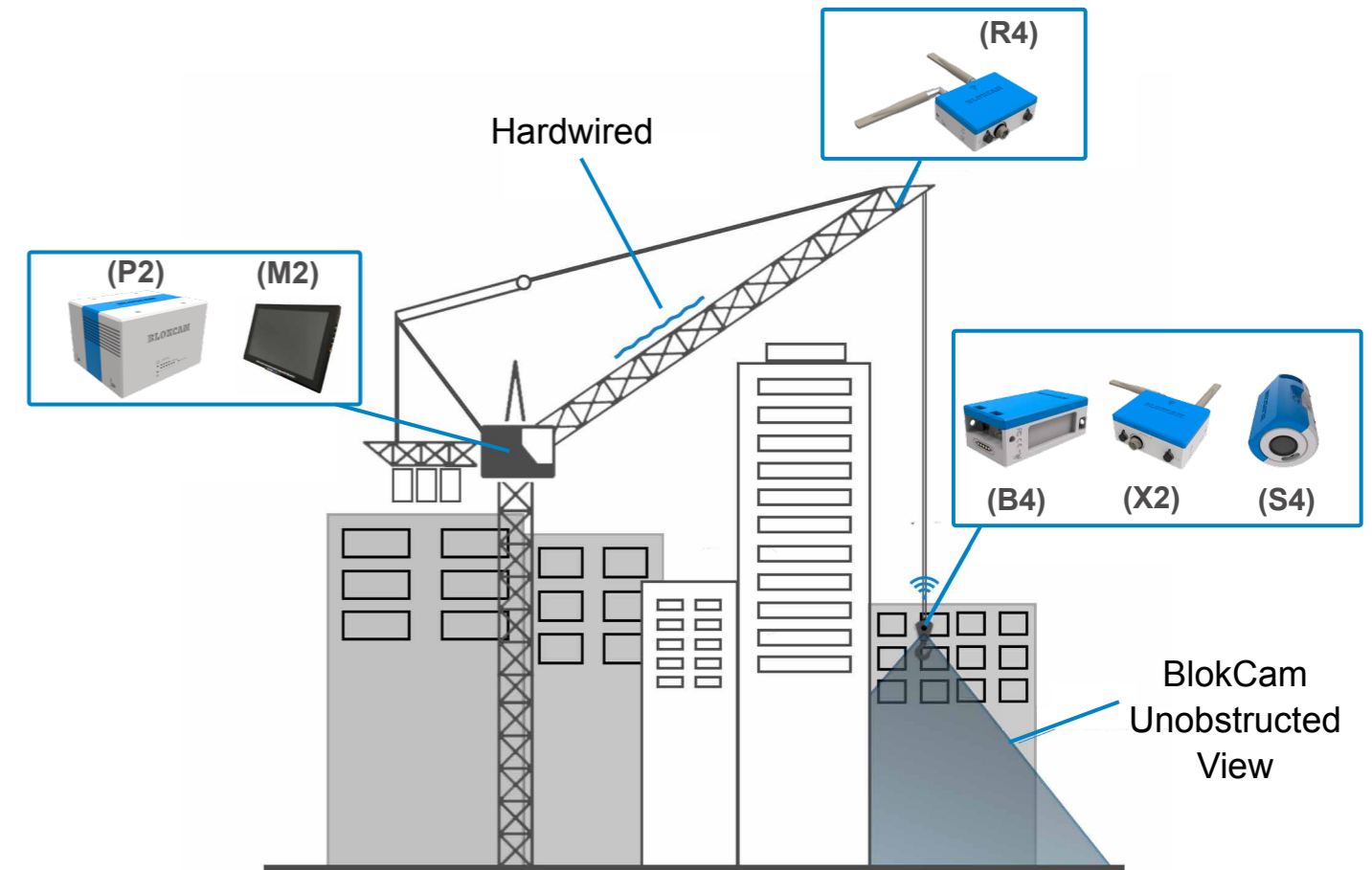


TELESCOPIC CONFIGURATION

“The first fully modular system, compatible with Telescopic and Mobile Cranes”

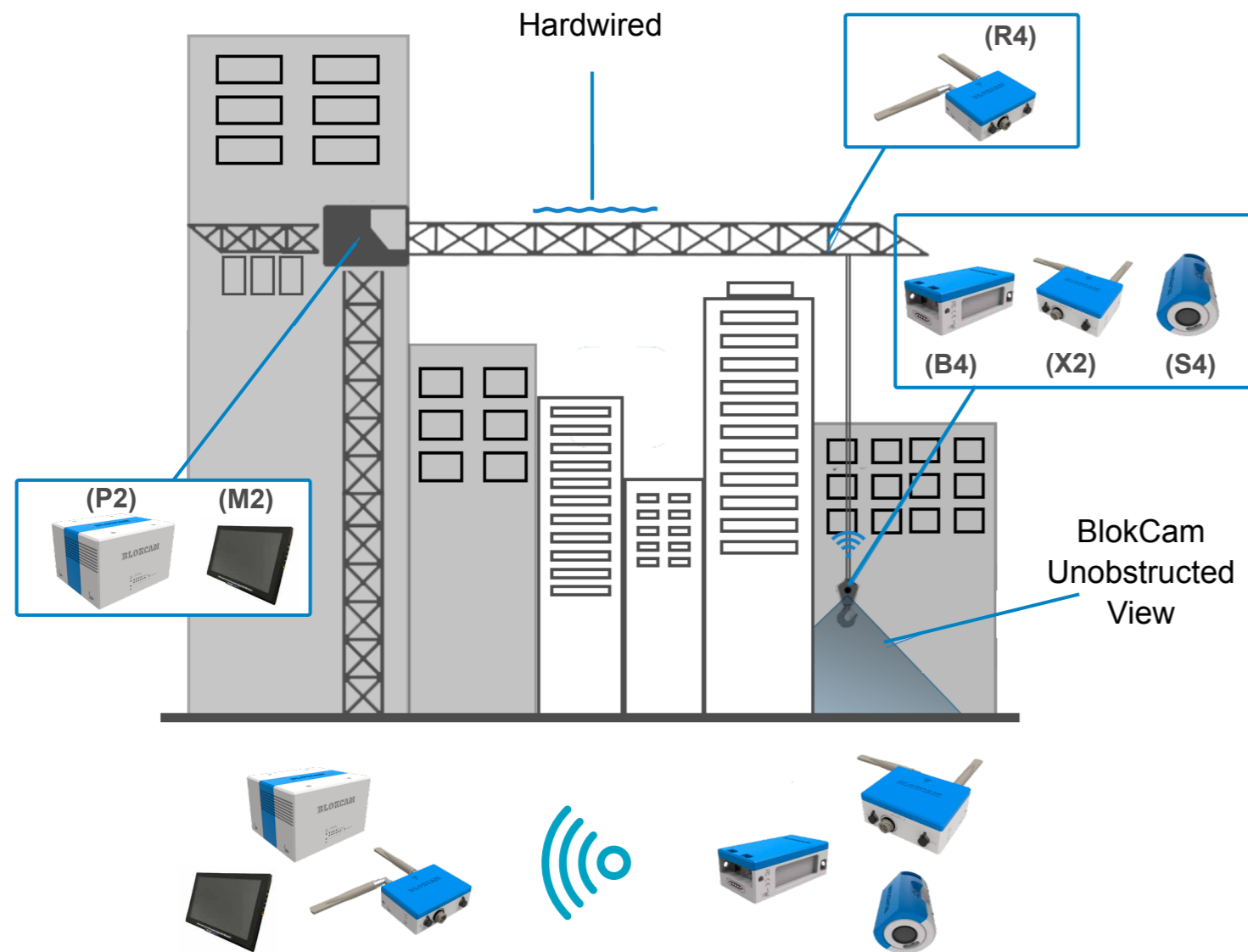


LUFFING CONFIGURATION





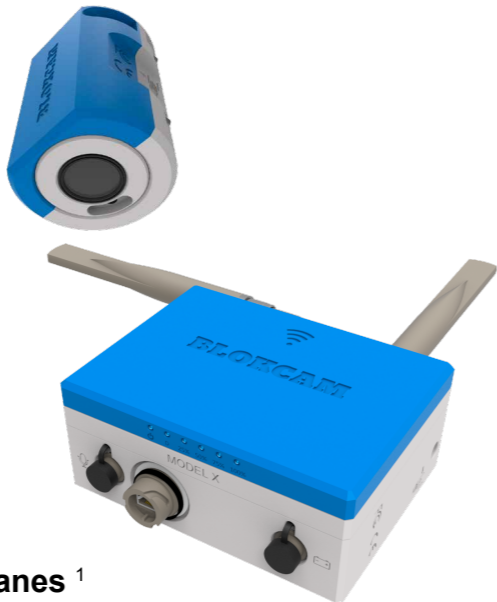
FLAT TOP CONFIGURATION



CRANE CAMERA

Design Overview

- Easy and quick to install; can be fitted within an hour
- Uses high powered neodymium magnets
- The lens is auto-focus and always gives clear views of the load and surrounding area below the hook
- HD 1080p resolution
- Audio from sensor to cab
- Optional single and split screen mode with additional cameras
- Long range transmission
- Record on loop for upto 30 days
- Purpose built aluminium housing
- Built in lanyard anchors
- Safety lanyard provides secondary security tethering
- Hands free operation
- Multi positional sensor for variable views
- LED indicators
- Two batteries per system
- Non hazardous battery
- 12 hour battery life ³
- Multivoltage AC and DC inputs
- Durable all-weather design, manufactured to IP67 rating
- -20°C to 55°C (-4°F to 131°F) operating temperature
- Optional mobile app and 4G live streaming ²
- CE and FCC Approved



Modular design, compatible across a wide variety of cranes ¹



Whats included:

Sensor (S4)



The S4 is a 113° wide angle lens. The low profile design, tool free operation and rotatable lens allows for easy installation on any side of the hook block including in between the cheek plates.

Height: 100mm (3.94 inches)
Width: 75mm (2.95 inches)
Depth: 69mm (2.72 inches)
Weight: 1250g (2.76 pounds)

- HD 1080p resolution
- 113° Viewing angle
- Tool free rotatable lens. Install vertically on any face of the hook block
- Omni directional audio sensor
- Permanent neodymium magnets
- Purpose built aluminium housing
- Built in lanyard anchors
- low profile design
- IP67 ⁶

Transmitter (X2)



X2 dramatically improves the most important aspects of the BlokCam. The combination of performance, specification, aesthetics and low profile design make this a must for all crane operations.

Height: 128mm (5.04 inches)
Width: 170mm (6.69 inches)
Depth: 71mm (2.8 inches)
Weight: 2100g (4.63 pounds)

- Audio from hook to cab
- Record
- Permanent neodymium magnets
- High quality industrial connectors
- Long range transmission
- Purpose built aluminium housing
- Multiple lanyard anchors
- 71mm low profile
- 4G live streaming ²
- Mobile app
- LED indicators
- IP67 ⁶

Battery (B4)



B4 is a non hazardous 19.2v Battery Pack. The clever tool-free design makes it easy to install, remove and charge.

Height: 195mm (7.68 inches)
Width: 105mm (4.1 inches)
Depth: 71mm (2.8 inches)
Weight: 2500g (5.51 pounds)

- Permanent neodymium magnets
- Purpose built aluminium housing
- Easy grip finger slots
- Easy to install, remove and charge
- Multiple lanyard anchors
- Compatible with our BlokCam Charging Station (CS1)
- 71mm low profile
- Non hazardous
- 12 hour operating time ³
- Easy access fuse
- IP67

Charging Station (CS1)



Our Charging Station is design to improve the efficiency of your BlokCam Batteries and the performance of the camera system.

Height: 96mm (3.78 inches)
Width: 150mm (5.9 inches)
Depth: 100mm (3.94 inches)
Weight: 2500g (5.51 pounds)

- Purpose built aluminium housing
- Multi voltage DC input
- LED Charge indicator
- Non slip rubber foot pads
- Colour coded input for fool proof installation

Repeater (R4)



Depending on the crane type and required installation the Repeater is mounted on the jib, boom tip or cab.

Height: 128mm (5.04 inches)
Width: 170mm (6.69 inches)
Depth: 58mm (2.28 inches)
Weight: 1800g (3.97 pounds)

- Multiple mounting options for universal deployment
- Multiple lanyard anchors
- High quality industrial connectors
- Designed for fast, wireless and telescopic deployment
- Long range transmission
- 58mm low profile design
- Purpose built aluminium housing
- IP67

Processor (P2)



Our purpose built Processor can project multiple high definition images and audio's through a single HDMI lead with less than 0.2 seconds of latency. The design of the Processor accomodates multivoltage AC and DC inputs making your BlokCam system compatible across all types of cranes. The Processor also provides power to the monitor, eliminating the need for a secondary socket or power supply.

Height: 121mm (4.76 inches)
Width: 190mm (7.48 inches)
Depth: 161mm (6.34 inches)
Weight: 3800g (8.38 pounds)

- Multiple mounting options for universal deployment
- Plug and play
- Low latency
- Single and split screen modes
- Multi voltage AC and DC inputs
- Purpose built aluminium housing
- Built in lanyard anchors
- Colour coded inputs for fool proof installation

Monitor (M2)



Our HD Monitor is a 10.1 inch 16:9 LCD monitor with a HDMI input. It has a 1280 x 800 pixel panel with automatic brightness control.

Height: 170mm (6.69 inches)
Width: 250mm (9.84 inches)
Depth: 29.6mm (1.17 inches)
Weight: 560g (1.24 pounds)

- Rugged design
- 10.1 inch display
- HD 1080p resolution
- Built in speakers

TWIN CRANE CAMERA

The only block-mounted, high definition, twin crane camera system

Modular design, compatible across a wide variety of cranes ¹



Sensor (S4t)



Our twin sensor enhances BlokCam's capabilities when working with larger hook blocks or other lifting accessories. The two Sensors connect to a single Transmitter allowing multiple viewing options.

Height: 100mm (3.94 inches)
Width: 75mm (2.95 inches)
Depth: 69mm (2.72 inches)
Weight: 1250g (2.76 pounds)

- HD 1080p resolution
- 113° Viewing angles
- Tool free rotatable lens. Install vertically on any face of the hook block
- Omni directional audio sensor
- Permanent neodymium magnets
- Purpose built aluminium housing
- Built in lanyard anchors
- low profile design
- IP67 ⁶

Twin Transmitter (X2t)

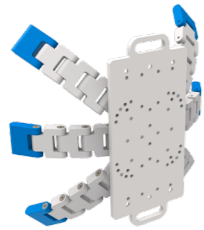


X2t offers all the benefits of the X2 but can process and transmit the audio-visual signal from two sensor simultaneously.

Height: 128mm (5.04 inches)
Width: 170mm (6.69 inches)
Depth: 71mm (2.8 inches)
Weight: 2100g (4.63 pounds)

- Records images from multiple cameras
- Permanent neodymium magnets
- High quality industrial connectors
- Long range transmission
- Purpose built aluminium housing
- Multiple lanyard anchors
- 71mm low profile
- 4G live streaming ²
- Mobile app
- LED indicators
- IP67 ⁶

BlokMag (BM1)



Attach your crane camera system to a hook block with a curved surface. Flat, spherical, cylindrical, narrow, short or tall, our modular #BlokMag system allows flat surfaces to mate with curved surfaces flawlessly.



- Quick and easy to install
- Uses high powered neodymium magnets
- Multiple lanyard anchors
- Available for all block-mounted components

V-Cam (VC4)



The Versatile-Cam is our hardwired option which gives you the ability to expand your BlokCam system to include additional Sensors. The build quality of the VC4 coupled with it's non intrusive size and mounting versatility means it can be deployed in seconds and used in a multitude of scenarios. Ideal for visual monitoring and data logging of the Hoist Drum, Luffing Drum, Slew Ring, Tail Swing and the Operator's Cab.

- Quick and easy to install
- Uses high powered neodymium magnets
- The lens is auto-focus and always gives clear views
- HD1080p resolution
- IP66
- Available with audio sensor as the (VC3a)

Battery (B4r)



B4r is a combination of B4 with a built in radio receiver designed to switch your BlokCam systems on and off remotely. Save time and extend the life of your battery with the simple push of a button. Can be used to switch power on/off at the hook block and at the boom tip.

Height: 195mm (7.68 inches)
Width: 105mm (4.1 inches)
Depth: 71mm (2.8 inches)
Weight: 2550g (5.62 pounds)

- Permanent neodymium magnets
- Purpose built aluminium housing
- Easy grip finger slots
- Multiple lanyard anchors
- Compatible with our BlokCam Charging Station (CS1)
- 71mm low profile
- Non hazardous
- 12 Hour operating time³
- 100m operating range
- IP67

V-Cam (VC4a)



The VC4a is our hardwired camera with a built in microphone. The build quality coupled with it's non intrusive size and mounting versatility means it can be deployed in seconds. The VC4a is most commonly used for audio-visual monitoring and data logging of the Operator's Cab.

- Quick and easy to install
- Uses high powered neodymium magnets
- The lens is auto-focus and always gives clear views
- HD1080p Resolution
- Built-in microphone
- PIR motion sensor
- Bracket for wall and corner mount
- Day & night with IR illumination

Footswitch (FS1)



When using multiple cameras, the Footswitch provides the hands free operation that a crane operator needs to flick between single and split screen mode.

- Quick and easy to install
- IP67

BlokCam Office Link (OL1)



BlokCam Office Link allows the data from your BlokCam to be captured in a site office for site and crane monitoring and surveillance. Your host computer could monitor and record data from multiple systems. BlokCam Office Link and software comes with many additional benefits and features including:

- Quick and easy to install
- Take screen shots
- Extract footage for training and investigation
- Integrated 12dbi antenna
- Designed for outdoor applications
- 1Km transmission distance
- Rugged mounting bracket
- IP66



Image of the BlokCam being projected on to a TV in the project office

BlokCam Pendulum (BP1)



BP1 allows you to install your existing sensor to the boom tip of a crane. The pendulum allows the sensor to pivot and focus on the hook block, load and surrounding area regardless of the angle of the jib.





"BlokCam is one of the best investments London Tower Cranes has made. The quality, ability and value of their camera system is second to none. We have found the BlokCam to be an invaluable asset for the crane operators, lifting teams and business as a whole."

Martin Harvey, Managing Director

London Tower Cranes



"Radius NFT owns and rents out several BlokCam systems to its customers. The safety benefits are being identified by our customers and their clients, so much so, that some are now implementing the use of BlokCam as a minimum requirement."

Teddy Holt, Operations Director

Radius Crane Management Ltd



"BlokCam has provided us with an innovative product that is well built with the service to back it up."

Rupert Cook, Associate Service Director

Falcon Tower Crane Services Ltd



"HTC started working with BlokCam in 2015 - on first impressions we were very impressed by the level of expertise and professionalism of this company. We are proud to work in partnership with BlokCam and are delighted with the service which we are able to provide to our customers. It is great to work with such a forward-thinking and proactive company. BlokCam's experience and knowledge of the crane industry has allowed them to develop and offer the highest quality system on the market. Therefore, we are looking forward to many more years of working together."

Elliott Simpson, Accessories Manager

WOLFF Onsite

BlokCam at Europe's Largest Infrastructure Project

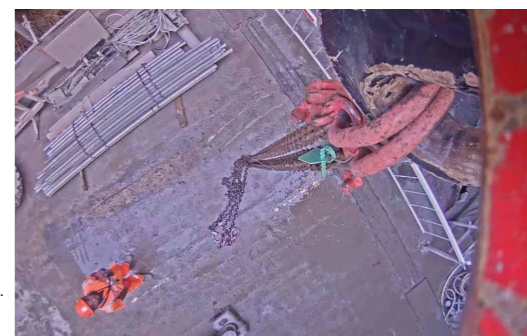
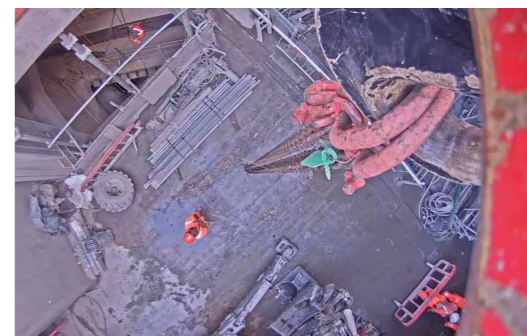
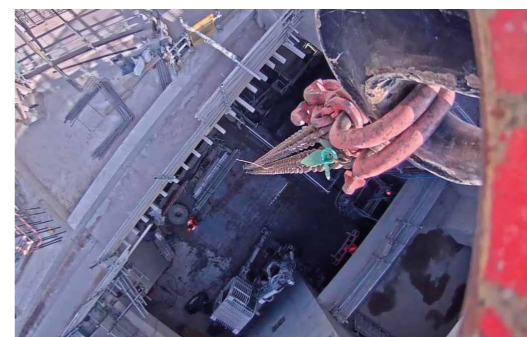
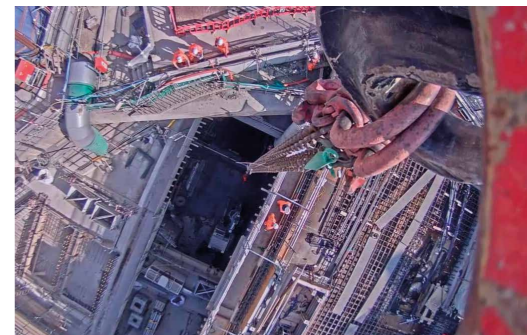
BlokCam has been adopted and installed on sites across Europe's largest infrastructure project.

BlokCam worked closely with H&S Advisors and the site lifting teams comprising of the Appointed Persons, Supervisors, Operators and Slinger Signallers.

Here is some feedback from the team.

- Slingers and Operators stated it was an "extra pair of eyes and ears and speeds up and clarifies radio communication by visualisation"
- Operators were able to "see potential hazards that may have otherwise gone unseen"
- "Lifting times were quicker and made previous blind lifts visible to the operator, even when the load itself creates a blind spot to the operator"
- Operators were also able to "see the attachment method and the type and quality of the slinging prior to lift." They were impressed with "good, quality clear picture from within the cab"
- Slinger Signaller could "revert to hand signals to improve communication"

1. Subject to Crane Make/Model.
 2. Subject to availability of a suitable mobile network, data charges apply.
 3. Battery life varies by use and configuration, two battery's per system.
 4. Size and weight varies by configuration and manufacturing process.
 5. Statement accurate on 02/11/2016. Specifications accurate on 02/11/2016, subject to change without notice.
 6. IP67 rating excludes IP65 audio sensor.
- *Actual product may differ from rendered image.





Designed by **BlokCam**

Connect with us:
info@blokcam.com
www.blokcam.com

Patent Pending

Distributed by:

